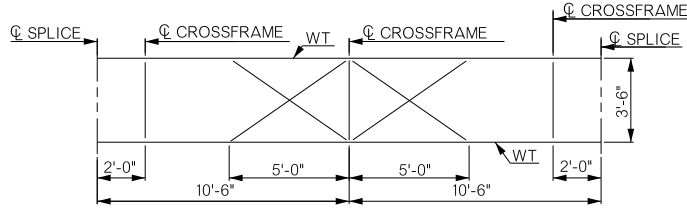
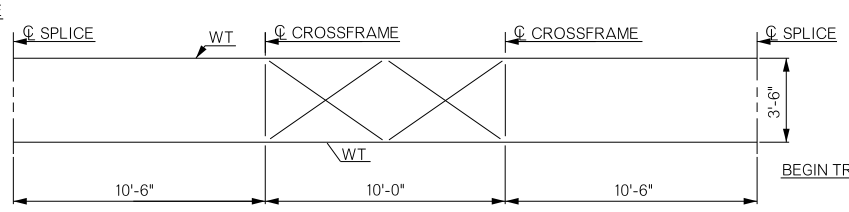


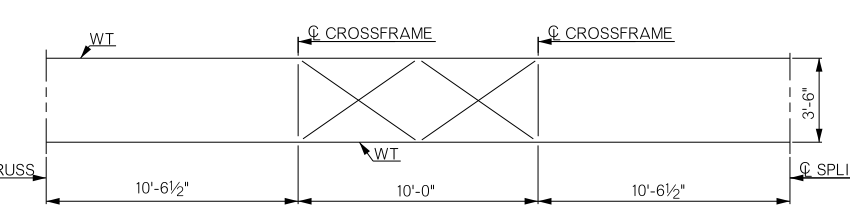
REVISIONS		
REV. NO.	DESCRIPTION	DATE



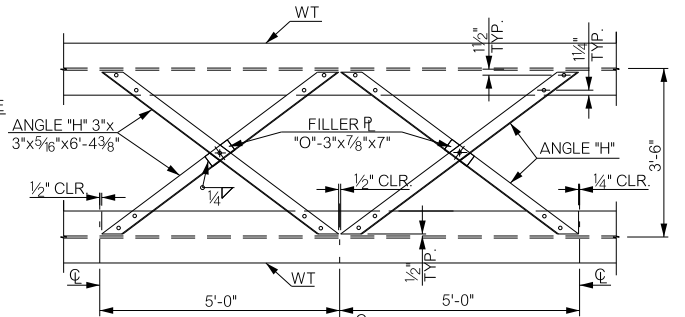
TOP LATERAL BRACING
INTERIOR 20'-0" TRUSS SECTION



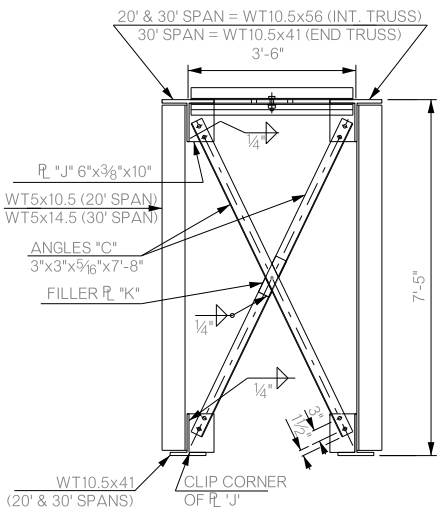
TOP LATERAL BRACING
INTERIOR 30'-0" TRUSS SECTION



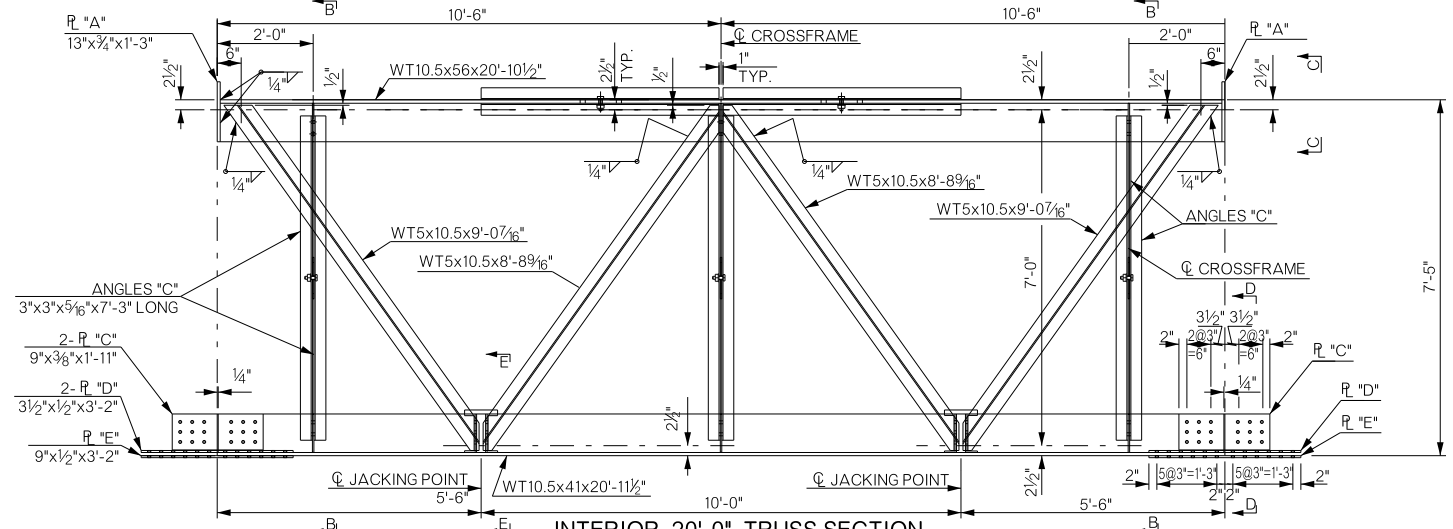
TOP LATERAL BRACING
END 30'-0" TRUSS SECTION



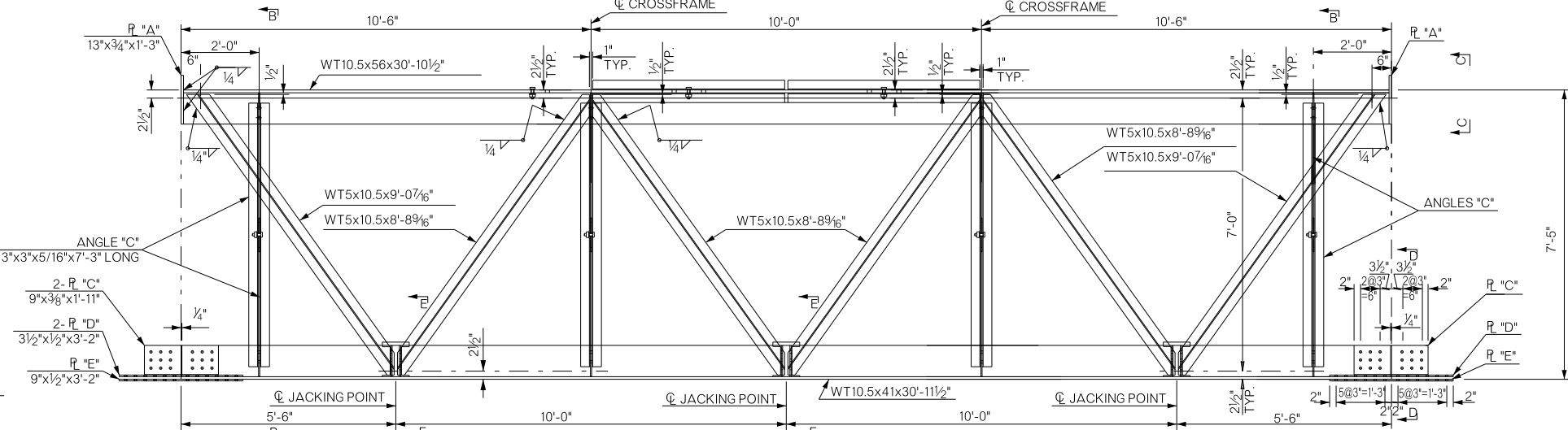
DETAIL OF TOP LATERAL BRACING



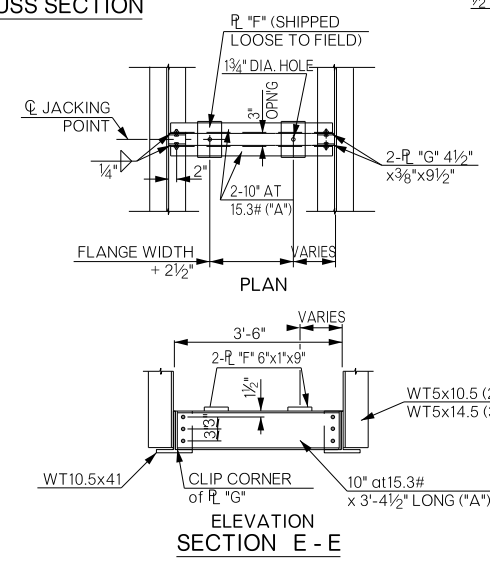
SECTION B - B



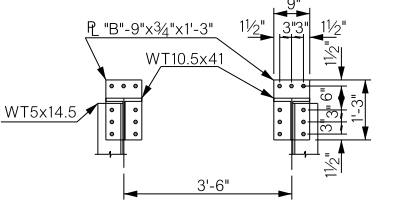
INTERIOR 20'-0" TRUSS SECTION



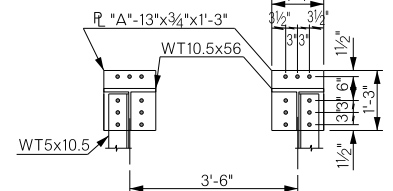
INTERIOR 30'-0" TRUSS SECTION



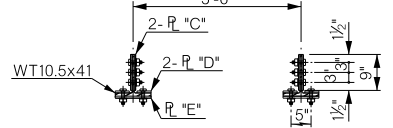
ELEVATION SECTION E - E



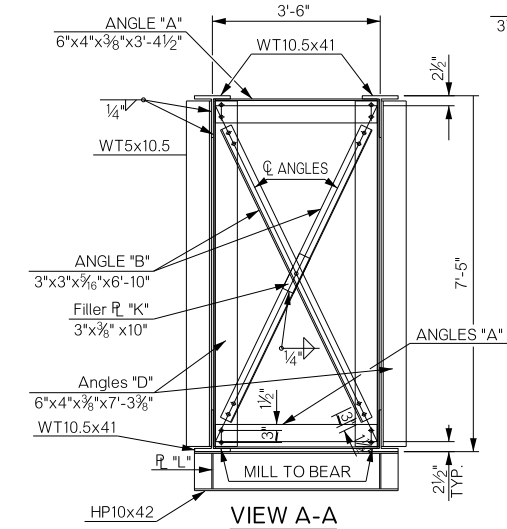
VIEW C - C
(30' SECTION)



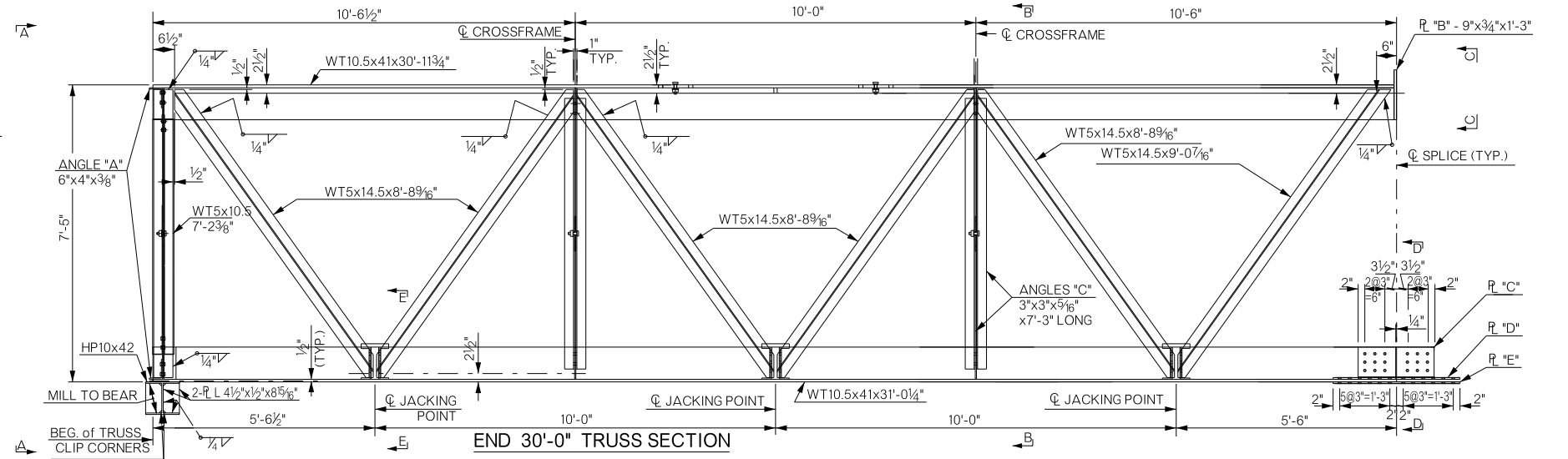
VIEW C - C
(20' SECTION)



SECTION D - D



VIEW A - A



END 30'-0" TRUSS SECTION

ALL STRUCTURAL STEEL SHALL CONFORM TO ASTM A-36. 1/2" MACHINE BOLTS SHALL MEET THE REQUIREMENTS OF ASTM A-37, GRADE A.

FIELD SPLICES SHALL BE FABRICATED SO THAT THE 30' TRUSS SECTION CAN BE BOLTED TO A 20' OR A 30' SECTION AS A UNIT. TENSION SPLICE PLATES SHALL BE FABRICATED SO THAT THEY CAN BE INTERCHANGEABLE FOR THE 30' AND 20' SECTIONS.

ALL WELDING FOR STRUCTURAL STEEL SHALL CONFORM TO THE STRUCTURAL WELDING CODE AWS D1.5 (INCLUDING CURRENT REVISION) AND THE MODIFICATIONS TO THIS CODE INCLUDED IN AASHTO STANDARD SPECIFICATIONS FOR WELDING OF STRUCTURAL STEEL HIGHWAY BRIDGES.

ALL BOLTS SHALL BE 3/4" H.S. BOLTS UNLESS OTHERWISE SHOWN OR NOTED. OPEN HOLES SHALL BE 1/8" DIAMETER FOR 3/4" H.S. BOLTS.

THE INDIVIDUAL TRUSS SECTIONS MAY BE SHIPPED OR STORED ASSEMBLED AS A UNIT OR SEPARATELY, AS DIRECTED BY THE RESIDENT ENGINEER.

BRIDGE "A" US 64 UNDER 65TH W AVE	TULSA COUNTY	Design	
		Detail	NOW 06/17
		Check	KRM 07/17
		Squad	MAYFIELD
		Engr.	ELYAZGI
STATE OF OKLAHOMA		DEPARTMENT OF TRANSPORTATION	
JOB/PIECE NO. 33285(04)		SHEET NO. B005	